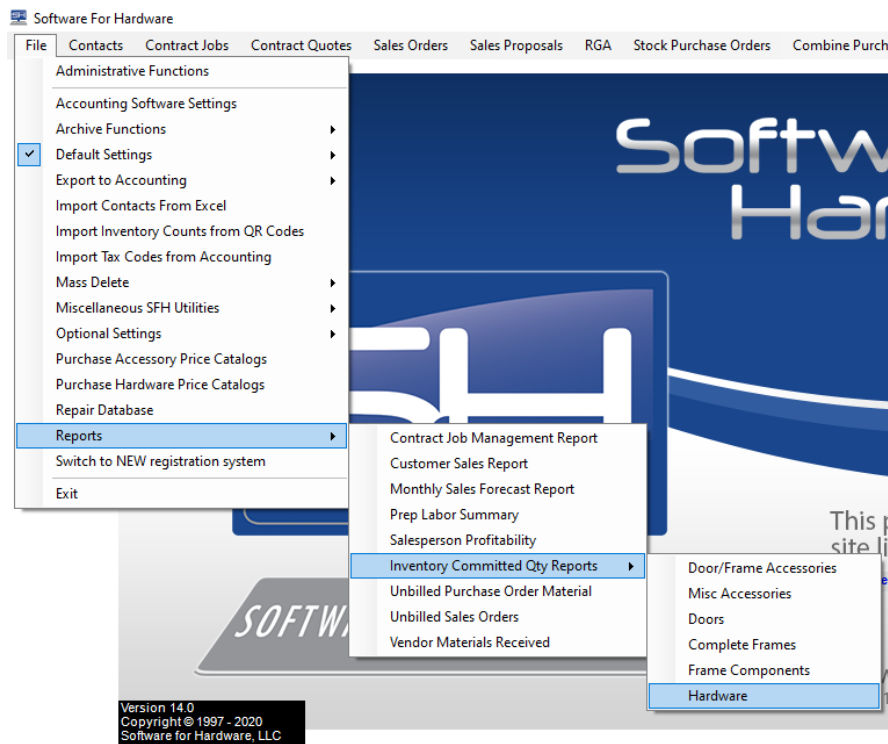


Inventory Committed Quantity Reports

Software for Hardware now offers the capability to preview inventory committed quantity reports for Door/Frame Accessories, Misc. Accessories, Doors, Complete Frames, Frame Components and Hardware. The reports are categorized by those items committed to Sales Orders, Change Orders and Contract Jobs.

How it works:

1. Launch Software for Hardware and from the Logo screen click the *File* menu selection.
2. Click *Reports* from the drop down menu.
3. From the fly out menu select *Inventory Committed Qty Reports*.
4. A second fly out menu appears. For this example, select *Hardware*.



5. The report will be displayed in the Preview window.
 - a. Sales Orders prints first.
 - b. **Note:** blank lines mean the manufacturer, accounting ID#, item type, series description and finish are the same as the line above and not displayed to prevent redundancy.

Hardware Committed Qty Report

Page 1 of 4
8/31/2020 5:15

Sales Orders

Manf	Accounting ID#	Item Type	Series/Desc	Finish	Sales Order#	Date Required	Committed Qty
ACHI	ACHI00000001	Cylinder - Rim	X21-x-3.5 BD	313A	119		1
					129		2
					144		1
CR	CR00000006	Electric Lock	CL33903 x AZD x 12AD	612	103		0
CRPI	CRPI00000013	Misc	FB ROD 18		103		1
HHC	HHC00000017	Cyl. Lockset (with thru-bolts)	ND53PD x RHO x 13-047 x 10-025	26D	69		20
HHC	HHC00000030	Hinge - (4-1/2 Std Wt(134))	1279 4-1/2" x 4-1/2"	US10	111		1
HHC	HHC00000001	Hinge - (4-1/2 Std Wt(134))	BB1279 4-1/2" x 4-1/2"	US26D	27		1
					49		9
					103		3
HHC	HHC00000022	Hinge - Non-Standard	BB1279 4" x 4"	US15	34		1
					47		1
HHC	HHC00000034	Sliding Door Lock/Latch	1-269-8693		119		5
					129		10
					144		5
LCN	LCN00000016	Closer - Parallel Arm	4116 x CUSH x SRT	DKBRZ	49		2
ROC	ROC00000001	Wall Stop	409	US26D	49		2
SCH	SCH00000016	Deadlock - Cylindrical	B60N x 12-321 x 10-116 x KA4	605	119		10
					126		10
					129		27
					130		5
					131		20
					132		3
					144		10
					145		20
					146		20
					147		20
TRIM	TRIM00000005	Surface Bolt - Frame Stop Mount	3922	626	159		1

c. Followed by Change Orders and Contract Jobs.

Hardware Committed Qty Report

Page 4 of 4
8/31/2020 5:04

Change Orders

Manf	Accounting ID#	Item Type	Series/Desc	Finish	Change Order#	Date Required	Committed Qty
					BB0304001-005		1
					BB0304001-026		1
					BB0304001-029		3
SCH	SCH00000002	Cyl. Lockset (with thru-bolts)	ND53PD x SPA x 13-047 x 10-025	626	AN-102-001		1
					AN-102-002		-1
					BB0304001-026		1
SCH	SCH00000010	Cylinder - Mortise	20-001 x 114 x C123	626	BB0304001-010		4
					BB0304001-011		4
					BB0304001-012		2
VDI	VDI00000001	Removable Mullion	9854 x 7-3 x 154	SP313	BB0304001-010		2
					BB0304001-011		2
					BB0304001-012		1

Contract Jobs

Manf	Accounting ID#	Item Type	Series/Desc	Finish	Contract Job#	Date Required	Committed Qty
HHC	HHC00000030	Hinge - (4-1/2 Std Wt(134))	1279 4-1/2" x 4-1/2"	US10	Blob6		18
HHC	HHC00000028	Hinge - (4-1/2 Std Wt(134))	BB1279 4-1/2" x 4-1/2"	26D	04142017		8
					Blob6		3
HHC	HHC00000001	Hinge - (4-1/2 Std Wt(134))	BB1279 4-1/2" x 4-1/2"	US26D	Blob6		6
HHC	HHC00000002	Hinge - Non-Standard	BB1279 4" x 4"	US3	POTEST001		3,433
LCN	LCN00000005	Closer	4041 x REG x SRT	US26D	Blob6		500
					Blob6		100