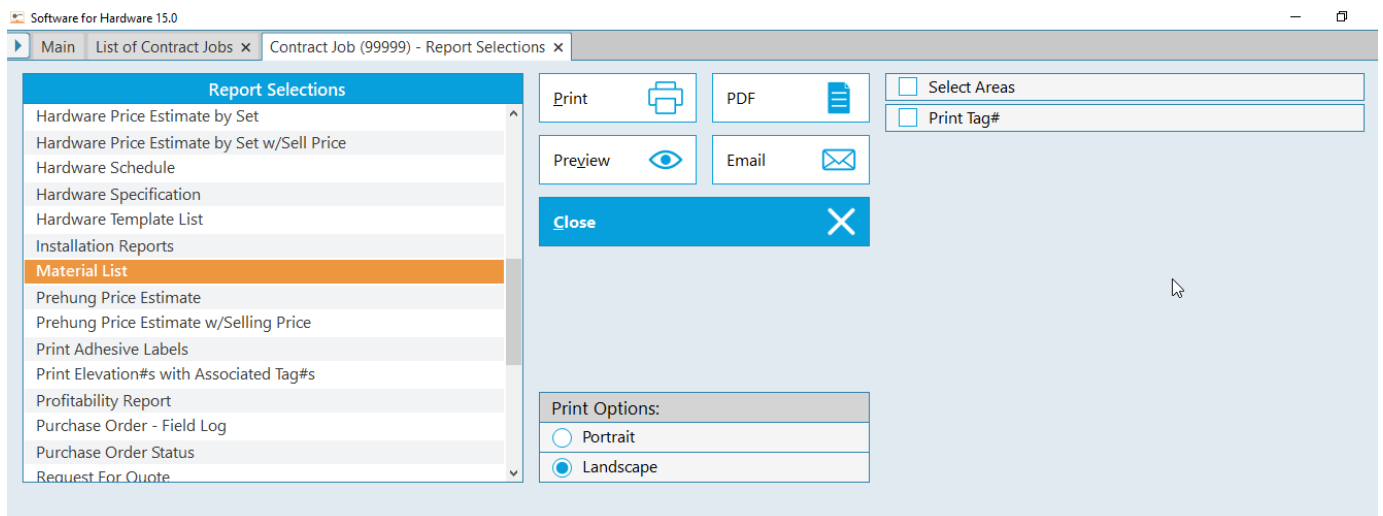


Product Subtotals in Material List Report

In the past the Material List report displayed subtotals by manufacturer. With this latest enhancement SFH has added subtotals by product type. For example: subtotals for doors, frames, hardware, etc.

How it works:

1. Launch Software for Hardware and from the Logo screen click the *Contract Jobs* or *Contract Quotes* menu selection.
2. Click the *Reports* menu selection across the top.
3. Scroll down through the Report Selections and click on *Material List*.
4. Select either Portrait or Landscape. For ease of clarity, we will select Landscape in our example below.



5. As with all contract reports you can preview, send to a printer, generate a PDF file, or send as an email attachment. Clicking the *Preview* button will generate the report.

Materials List
Training Project Template

Job Name: Training Project
Template

1/24/2023 11:24

Doors

Manufacturer	Total Qty	Description	Opening List	Total List	Disc %	Opening Cost	Total Cost	Markup %	Opening Quote	Total Quote	Opening Profit	Total Profit
Fortress Door Company	1	FPC7 RC Nat Birch 4-0 7-0 1 3/4 F Stain Grade	255.00	255.00	0.00	255.00	255.00	40.00	357.00	357.00	102.00	102.00
		Preps per door: 3 FORT/412HG, 1 OURS/Narrow Lite				85.00	85.00	40.00	119.00	119.00	34.00	34.00
Fortress Door Company	6	PC7 RC Nat Birch 3-0 7-0 1 3/4 Flush Stain Grade	125.00	750.00	0.00	125.00	750.00	40.00	175.00	1,050.00	50.00	300.00
		Preps per door: 3 FORT/412HG				45.00	270.00	40.00	63.00	378.00	18.00	108.00
Fortress Door Company	1	PC7 RC Nat Birch 3-0 7-0 1 3/4 Flush Stain Grade	125.00	125.00	0.00	125.00	125.00	40.00	175.00	175.00	50.00	50.00
		Preps per door: 3 FORT/412HG, 1 OURS/Narrow Lite				85.00	85.00	40.00	119.00	119.00	34.00	34.00
Fortress Door Company	1	PC7 RC Nat Birch 3-0 7-0 1 3/4 Flush Stain Grade	125.00	125.00	0.00	125.00	125.00	40.00	175.00	175.00	50.00	50.00
		Preps per door: 3 FORT/412HG, 1 OURS/24x64 CO. 1 OURS/Full Cutout				125.00	125.00	40.00	175.00	175.00	50.00	50.00
Fortress Door Company	1	PC7 RC Nat Birch 3-0 7-0 1 3/4 Flush Stain Grade	125.00	125.00	0.00	125.00	125.00	40.00	175.00	175.00	50.00	50.00
		Preps per door: 3 FORT/412HG, 1 OURS/12x12 Louv.				63.00	63.00	40.00	88.20	88.20	25.20	25.20
Subtotal	10			1,380.00			2,008.00	40.00		2,811.20		803.20
Steelcraft	2	L18 18 A60 3-0 7-0 1 3/4 F Primed	804.00	1,608.00	65.00	281.40	562.80	45.00	408.03	816.06	126.63	253.26
Steelcraft	1	L18 18 A60 3-0 7-0 1 3/4 F Primed	804.00	804.00	65.00	281.40	281.40	45.00	408.03	408.03	126.63	126.63
Steelcraft	1	L18 18 A60 3-0 7-0 1 3/4 F Primed	804.00	804.00	65.00	281.40	281.40	45.00	408.03	408.03	126.63	126.63
		Preps per door: 2 SC/FB PrepW/A				30.10	30.10	45.00	43.65	43.65	13.55	13.55
Subtotal	4			3,216.00			1,155.70	45.00		1,675.77		520.07
Doors Total	14			4,596.00			3,163.70	41.83		4,486.97		1,323.27

6. In the above example you will note the addition of a *Doors Total* section containing the sum totals of all the door manufacturers.